


Tests Edit Test

 Tests
  Groups
  Links

 **Primary 3 - Term 3 Science (Rosyth)**
 Duplicate

 Print

 Delete

 Assign Test
Test Introduction[Edit Introduction \(1\)](#)**13 Questions** (11 Points)Question Bank: 19,439 Questions 

Test Questions

1 Test Assignment

Question 1

Primary 3 Science » Primary 3 Science (Term 3)

1 pt

Study the table below.

Digestive System	Circulatory System	Respiratory System
stomach	heart	lungs
small intestine	blood vessels	rib cage

Which of the following is grouped **wrongly**?

- A) heart
- B) lungs
- C) ribcage
- D) stomach

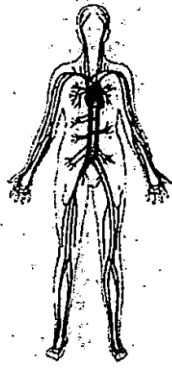
Question Type: Multiple Choice
Randomize Answers: No
Date Added: Wed 10th Jun 2020
Last Modified: Wed 10th Jun 2020
QID#: 21,607,630

[Answers](#) | [Edit](#) | [Duplicate](#) | [Used In](#) | [Reorder](#)
[Remove From Test](#)**Question 2**

Primary 3 Science » Primary 3 Science (Term 3)

1 pt

Which of the following statement(s) describe(s) the system below?



- A. It removes undigested food from the body.
- B. It breaks down food into smaller substances.
- C. It carries digested food, water and oxygen to all parts of the body.
- D. It takes oxygen into the body and removes carbon dioxide from the body.

- ✓ A) C only
- B) D only
- C) A and B only
- D) C and D only

Question Type: Multiple Choice
Randomize Answers: No
Date Added: Wed 10th Jun 2020
Last Modified: N/A
QID#: 21,607,760

[Answers](#) | [Edit](#) | [Duplicate](#) | [Used In](#) | [Reorder](#)

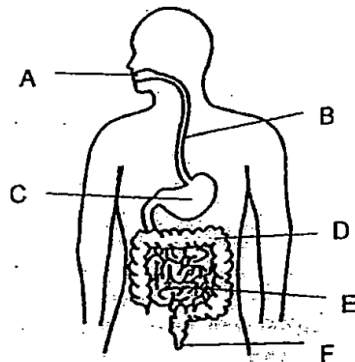
[Remove From Test](#)

Question 3

Primary 3 Science » Primary 3 Science (Term 3)

1 pt

Study the diagram below.



Which of the following shows how food travels through the digestive system before digested food enters the bloodstream?

- A) A→B→C→D
- ✓ B) A→B→C→E
- C) B→C→E→D
- D) C→E→D→F

Question Type: Multiple Choice
Randomize Answers: No
Date Added: Wed 10th Jun 2020
Last Modified: Wed 10th Jun 2020
QID#: 21,607,836

[Answers](#) | [Edit](#) | [Duplicate](#) | [Used In](#) | [Reorder](#)

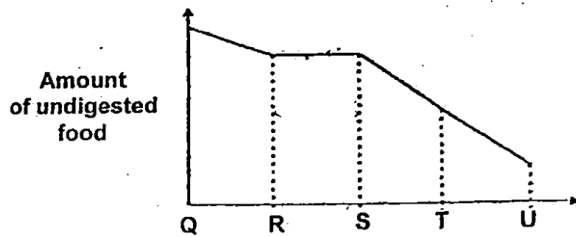
[Remove From Test](#)

Question 4

Primary 3 Science » Primary 3 Science (Term 3)

1 pt

The graph below shows the amount of undigested food as it travels through the human digestive system.



Based on the graph above, which part represents the gullet?

- A) QR
- ✓ B) RS
- C) ST
- D) TU

Question Type: Multiple Choice
Randomize Answers: No
Date Added: Wed 10th Jun 2020
Last Modified: Wed 10th Jun 2020
QID#: 21,607,937

[Answers](#) | [Edit](#) | [Duplicate](#) | [Used In](#) | [Reorder](#)

[Remove From Test](#)

Question 5

Primary 3 Science » Primary 3 Science (Term 3)

1 pt

Beatrice has been passing out watery waste. Which part of the digestive system is not working well?

- A) gullet
- B) stomach
- C) small intestine
- ✓ D) large intestine

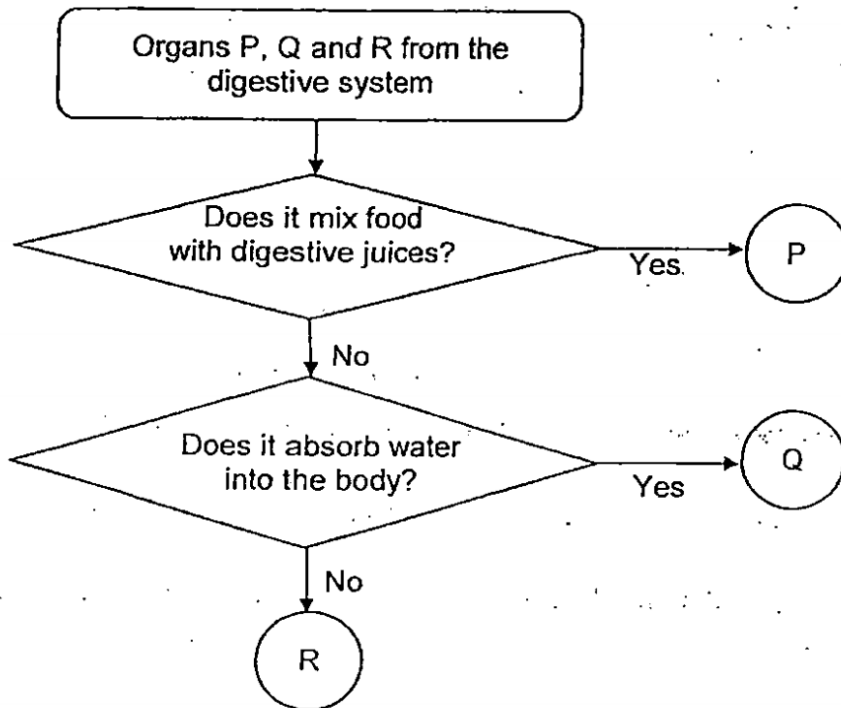
Question Type: Multiple Choice
Randomize Answers: No
Date Added: Wed 10th Jun 2020
Last Modified: N/A
QID#: 21,607,955

Question 6

Primary 3 Science » Primary 3 Science (Term 3)

1 pt

Study the chart below.



Which of the following is correct?

	P	Q	R
1)	gullet	small intestine	mouth
2)	mouth	stomach	anus
3)	small intestine	large intestine	gullet
4)	stomach	gullet	small intestine

- A) 1
 B) 2
 ✓ C) 3
 D) 4

Question Type: Multiple Choice
Randomize Answers: No
Date Added: Wed 10th Jun 2020
Last Modified: Wed 10th Jun 2020
QID#: 21,608,005

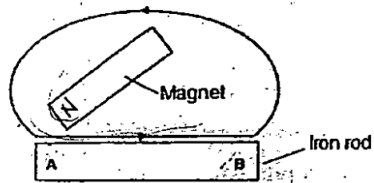
Question 7

Primary 3 Science » Primary 3 Science (Term 3)

1 pt

Melvin wanted to magnetise an iron rod AB using a magnet.

He stroked the rod 20 times in the same direction with the magnet as shown in the diagram below.



To find out if the rod was magnetised, Melvin used the rod to attract some steel nails. It attracted two steel nails.

Melvin repeated the above experiment using another similar iron rod.

What should he do to the iron so that it could attract more steel nails?

- A) Stroke it from A to B for 5 times
- ✓ B) Stroke it from A to B for 30 times
- C) Stroke it from B to A for 20 times
- D) Stroke it with both poles of the magnet for 20 times each

Question Type: Multiple Choice
Randomize Answers: No
Date Added: Wed 10th Jun 2020
Last Modified: Wed 10th Jun 2020
QID#: 21,608,106

[Answers](#) | [Edit](#) | [Duplicate](#) | [Used In](#) | [Reorder](#)

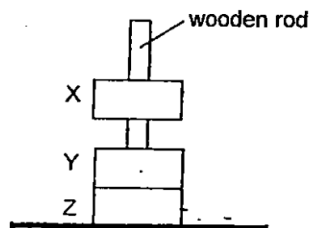
[Remove From Test](#)

Question 8

Primary 3 Science » Primary 3 Science (Term 3)

1 pt

Albert placed 3 metal rings, X, Y and Z, through a wooden rod as shown below.



He made the following observations:

- A: Metal rings X and Y did not touch each other.
- B: Metal rings Y and Z touched each other.

Based on his observations above, which of the following(s) is/are definitely magnet.

- A) X only
- B) Z only
- ✓ C) X and Y only
- D) X, Y and Z

Question Type: Multiple Choice

Randomize Answers: No
Date Added: Wed 10th Jun 2020
Last Modified: N/A
QID#: 21,608,540

[Answers](#) | [Edit](#) | [Duplicate](#) | [Used In](#) | [Reorder](#)

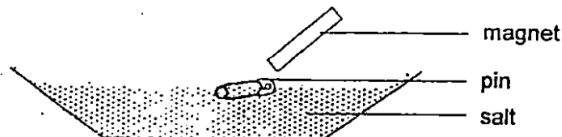
[Remove From Test](#)

Question 9

Primary 3 Science » Primary 3 Science (Term 3)

1 pt

Tricia tried to remove a pin from a tray of salt by using a bar magnet as shown in the diagram below.



She observed that she could not remove the pin.

Which of the following are possible reasons for the above observation?

- A: The magnet was not placed in the N-S direction.
- B: The pin was not made of a magnetic material.
- C: The magnetic strength of the bar magnet was too weak.

- A) A and B only
- B) A and C only
- ✓ C) B and C only
- D) A,B and C

Question Type: Multiple Choice
Randomize Answers: No
Date Added: Wed 10th Jun 2020
Last Modified: N/A
QID#: 21,608,623

[Answers](#) | [Edit](#) | [Duplicate](#) | [Used In](#) | [Reorder](#)

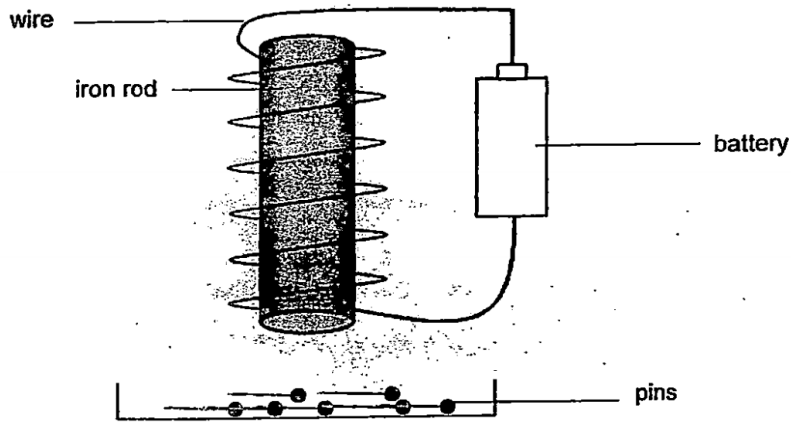
[Remove From Test](#)

Question 10

Primary 3 Science » Primary 3 Science (Term 3)

1 pt

Benson made an electromagnet using an iron rod as shown below. The iron rod was able to attract only four pins.



Which of the following(s) should he do to increase the number of pins that the electromagnet can attract?

- A: Add one more battery to the set-up.
- B: Replace the iron rod with a copper rod.
- C: Increase the number of coils around the iron rod.

- A) C only
- ✓ B) A and C only
- C) B and C only
- D) A, B and C

Question Type: Multiple Choice
Randomize Answers: No
Date Added: Wed 10th Jun 2020
Last Modified: N/A
QID#: 21,608,644

[Answers](#) | [Edit](#) | [Duplicate](#) | [Used In](#) | [Reorder](#)

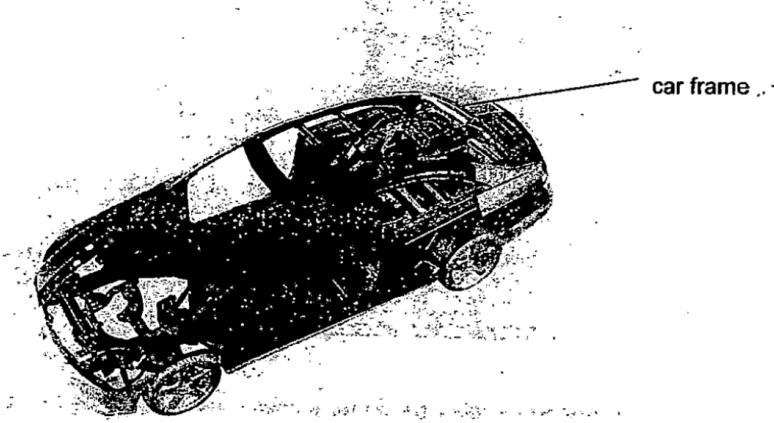
[Remove From Test](#)

Question 11

Primary 3 Science » Primary 3 Science (Term 3)

1 pt

Study the car frame as shown in the diagram below.



a) Name the human body system that serves the same function as the car frame. [1]

Accepted answers:

✓ Skeletal system

Question Type: Free Text
 Date Added: Thu 16th Jul 2020
 Last Modified: N/A
 QID#: 22,460,658

[Answers](#) | [Edit](#) | [Duplicate](#) | [Used In](#) | [Reorder](#)

[Remove From Test](#)

Question 12

Primary 3 Science » Primary 3 Science (Term 3)

0 pts

b). How is the function of the car frame similar to the human system in part (a)? [1]

Question Type: Essay
 Date Added: Wed 10th Jun 2020
 Last Modified: Thu 16th Jul 2020
 QID#: 21,608,766

Correctly answered feedback

b. Both the car frame and the skeletal system gives the shape and supports the car or the body.

Incorrectly answered feedback

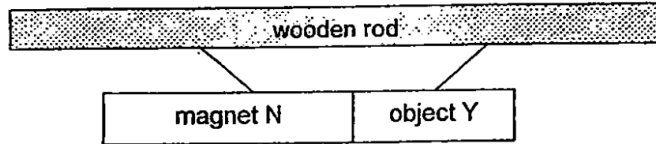
b. Both the car frame and the skeletal system gives the shape and supports the car or the body.

Question 13

Primary 3 Science » Primary 3 Science (Term 3)

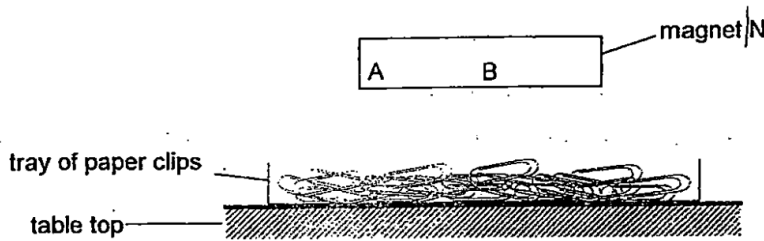
0 pts

Siti observed the positions of magnet N and object Y when hung freely on a wooden rod.



- a) Siti said that object Y is a magnet based on the observation above. Do you agree? Explain why. [1]

Siti then moved magnet N near a tray of paper clips as shown below.



- b) Which part of the magnet (A or B) attracted more paper clips? Explain why. [2]

Question Type: Essay
 Date Added: Wed 10th Jun 2020
 Last Modified: Thu 16th Jul 2020
 QID#: 21,608,808

Correctly answered feedback

a. No, because if object Y is a magnet it will repel.

b. Part A attracted more paper clips because a magnet is the strongest at the poles, and 'A' is at the poles.

Incorrectly answered feedback

a. No, because if object Y is a magnet it will repel.

b. Part A attracted more paper clips because a magnet is the strongest at the poles, and 'A' is at the poles.

[Answers](#) | [Edit](#) | [Duplicate](#) | [Used In](#) | [Reorder](#)

[Remove From Test](#)